

CERTIFIED LAND CORNER RECORDATION

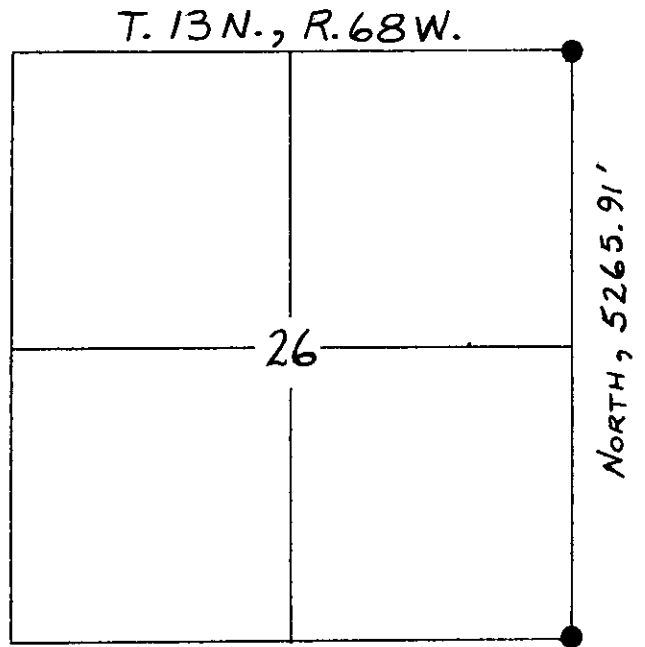
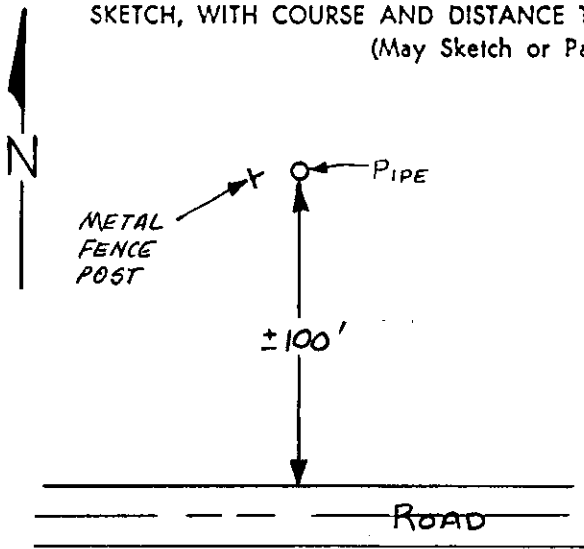
DESCRIPTION OF CORNER EVIDENCE FOUND, AND ORIGINAL RECORD (if known)

NESC, Sec. 26, T13N, R68W

Found a pipe 0.1' in diameter standing 0.4' above ground surface.

DESCRIPTION OF MONUMENT AND ACCESSORIES ESTABLISHED TO PERPETUATE THE ORIGINAL LOCATION OF THIS CORNER:

SKETCH, WITH COURSE AND DISTANCE TO ADJACENT CORNER IF DETERMINED IN THIS SURVEY. (May Sketch or Paste Reproduction on Reverse Side.)



NOT TO SCALE

I, Stanton J. Abell, Jr. certify that I have carefully performed or reviewed the work done on the diagrammed corner as reported on this recordation form and approve the same.

Warland Lugo

Stanton J. Abell, Jr. P.E. & L.S. 2877
Signature of Surveyor Registration No.

STATE OF WYOMING,
Office of Clerk and Recorder,
County of Taramie

7-13-84

AUG 16 1984

This "corner record" was filed for record on the 16 day of Aug, 1984, was noted on the cross-index plat and is assigned page No. _____, in book No. _____

James C. Withead
County Official

Cross Index No. _____	T. _____	R. _____	Mer. _____
_____	T. _____	R. _____	Mer. _____
_____	T. _____	R. _____	Mer. _____
_____	T. _____	R. _____	Mer. _____
_____	T. _____	R. _____	Mer. _____
_____	T. _____	R. _____	Mer. _____
_____	T. _____	R. _____	Mer. _____

R-21 13-68

BOOK 1203

575